

Plastic pneumatic linear unit KONEX H 50

Assembly and operating manual



Imprint

Copyright:

This manual remains the copyrighted property of SCHUNK GmbH & Co. KG. It is solely supplied to our customers and operators of our products and forms part of the product. This documentation may not be duplicated or made accessible to third parties, in particular competitive companies, without our prior permission.

Technical changes:

We reserve the right to make alterations for the purpose of technical improvement.

Document number: 0389175

Edition: 04.01 | 23/01/2014 | en

© SCHUNK GmbH & Co. KG

All rights reserved.

Dear customer,

congratulations on choosing a SCHUNK product. By choosing SCHUNK, you have opted for the highest precision, top quality and best service.

You are going to increase the process reliability of your production and achieve best machining results – to the customer's complete satisfaction.

SCHUNK products are inspiring.

Our detailed assembly and operation manual will support you.

Do you have further questions? You may contact us at any time – even after purchase.

Kindest Regards

Yours SCHUNK GmbH & Co. KG

Spann- und Greiftechnik

Bahnhofstr. 106 – 134

D-74348 Lauffen/Neckar

Tel. +49-7133-103-0

Fax +49-7133-103-2399

info@de.schunk.com

www.schunk.com



Reg. No. 003496 QM08



Reg. No. 003496 QM08

Table of contents

1	About this manual	5
1.1	Warnings.....	5
1.1.1	Key words.....	5
1.1.2	Symbols	5
1.2	Applicable documents	6
2	Basic safety notes	7
2.1	Intended use.....	7
2.2	Not intended use.....	7
2.3	Environmental and operating conditions.....	7
2.4	Product safety.....	8
2.4.1	Protective equipment	8
2.4.2	Constructional changes, attachments, or modifications.....	8
2.5	Personnel qualification.....	8
2.6	Using personal protective equipment.....	9
2.7	Notes on particular risks.....	9
3	Warranty	10
4	Scope of delivery	10
5	Accessories	10
5.1	Sensors.....	10
6	Technical data	11
7	Assembly	12
7.1	Mechanical connection	12
7.2	Air connection	13
7.3	Sensors.....	13
7.3.1	MMS 30 magnetic switch.....	14
8	Maintenance and Care	16
8.1	Notes.....	16
8.2	Maintenance and lubrication intervals	16
8.3	Lubricants/Lubrication points (basic lubrication)	16
8.4	Disassembly of the module	17
8.5	Servicing and assembling the module.....	18
8.6	Disposal.....	18
9	Connection technique	19
9.1	Assembly / Disassembly of the Module	19
9.2	Connection	19

9.3 Loosen the connection in a „one second“- cycle time.....	20
10 Assembly drawing	21
11 Seal kit	22
12 Accessory pack	22
13 Translation of original declaration of incorporation.....	23

1 About this manual

This instruction is an integral part of the product and contains important information for a safe and proper assembly, commissioning, operation, maintenance and help for easier trouble shooting.

Before using the product, read and note the instructions, especially the chapter "Basic safety notes".

1.1 Warnings

The following key words and symbols are used to highlight dangers.

1.1.1 Key words

DANGER	Dangers for persons. Non-compliance will inevitably cause irreversible injury or death.
WARNING	Dangers for persons. Non-compliance may cause irreversible injury or death.
CAUTION	Dangers for persons. Non-observance may cause minor injuries.
NOTICE	Information about avoiding material damage

1.1.2 Symbols



Warning about a danger point



Warning about hand injuries



General mandatory sign to prevent material damage

1.2 Applicable documents

- General terms of business
- Catalog data sheet of the purchased product
- Assembly and Operating manuals of the accessories

The documents listed here, can be downloaded on our homepage
www.schunk.com

2 Basic safety notes

2.1 Intended use

The module is designed exclusively for the linear movement of useful loads in any position.

The product is intended for installation in a machine/system. The requirements of the applicable guidelines must be observed and complied with.

The product may be used only in the context of its defined application parameters ([☞ 6, Page 11](#)).

The product is designed for industrial use.

To use this unit as intended, it is also essential to observe the technical data and installation and operation notes in this manual and to comply with the maintenance intervals.

2.2 Not intended use

Use which is not specified as an intended use is for instance when the product is for example used as a pressing tool, stamping tool, lifting tool, guide for tools, cutting tool, tensioning mean, boring tool.

2.3 Environmental and operating conditions

- Use the module only within its defined application parameters ([☞ 6, Page 11](#)) "Technical Data" and catalog
- Do not expose the module to excessive vibration and / or shock.
- Sicherstellen, dass die Umgebung sauber ist und die Umgebungstemperatur den Angaben gemäß Katalog entspricht. Wartungs- und Schmierintervalle beachten ([☞ 8, Page 16](#))
- Make sure that the environment is free from splash water and vapors as well as from abrasion or processing dust. Excepted are modules that are designed especially for contaminated environments.
- Strong magnetic fields can impair the function of the module. If the product is to be used in strong magnetic fields, contact your SCHUNK partner.

2.4 Product safety

Dangers arise from the product, if:

- the product is not used in accordance with its intended purpose.
- the product is not installed or maintained properly.
- the safety and installation notes are not observed.

Avoid any manner of working that may interfere with the function and operational safety of the product.

Wear protective equipment.

NOTE

More information are contained in the relevant chapters.

2.4.1 Protective equipment

Provide protective equipment per EC Machinery Directive.

2.4.2 Constructional changes, attachments, or modifications

Additional drill holes, threads, or attachments that are not offered as accessories by SCHUNK may be attached only with permission of SCHUNK.

2.5 Personnel qualification

The assembly, initial commissioning, maintenance, and repair of the product may be performed only by trained specialist personnel. Every person called upon by the operator to work on the product must have read and understood the complete assembly and operating manual, especially the chapter "Basic safety notes" ([👉 2, Page 7](#)). This applies particularly to personnel only used occasionally, such as maintenance personnel.

2.6 Using personal protective equipment



When using this product, observe the relevant industrial safety regulations and use the personal protective equipment (PPE) required!

- Use protective gloves, safety shoes and safety goggles.
- Observe safe distances.
- Minimal safety requirements for the use of equipment.

2.7 Notes on particular risks

Generally valid:

- Remove the energy supplies before installation, modification, maintenance, or adjustment work.
- Make sure that no residual energy remains in the system.
- Do not move parts by hand when the energy supply is connected.
- Do not reach into the open mechanism or the movement area of the unit.
- Perform maintenance, modifications, and additions outside the danger zone.
- Secure the product during all operations against uncontrolled activation.
- Take a precautionary approach by maintenance and disassembly.
- Only specially trained staff should disassemble the product.

	 WARNING
	<p>Risk of injury from objects falling and being ejected</p> <ul style="list-style-type: none"> • The danger zone must be surrounded by a safety fence during operation.

3 Warranty

The warranty is valid for 24 months from the delivery date to the production facility under the following conditions:

- Intended use in 1-shift operation
- Observe the mandatory maintenance and lubrication intervals
- Observe the environmental and operating conditions

Parts touching the work piece and wear parts are not part of the warranty.


4 Scope of delivery

The scope of delivery includes:

- Plastic pneumatic linear unit KONEX H in the ordered model.
- Accessory pack

5 Accessories


A wide range of accessories are available for this module.

For information about which accessories can be used with the appropriate product version  catalog.

5.1 Sensors

Overview of the compatible sensors

Designation	Type
Magnetic switch	MMS

- Exact type designation of the compatible sensors see  catalog.
- If you require further information on sensor operation, contact your SCHUNK contact person or download information from our homepage.

6 Technical data

Size	KONEX H 50
Piston force [N]	250.0
Stroke [N]	60.0
Noise emission [dB(A)]	≤ 70
Weight [kg]	0.45
IP rating	42
Nominal working pressure [bar]	6.0
Max. pressure [bar]	6.5
Ambient temperature [°C]	
Min. ambient temperature [°C]	+ 5
max. ambient temperature [°C]	+ 60

Further technical data can be found in the catalog data sheet.
The most recent version applies.

7 Assembly

The linear unit can be fastened to the internal threads of the bottom or, optionally, to the T-nuts in the lateral profile grooves.

Do not clamp against the cover or bottom in the event of lateral mounting of the linear unit.

Only use the basic housing for flanging.

Use the cylindrical pins from the accessory pack for centering on the base side.

7.1 Mechanical connection

Check the evenness of the bolting surface The values relate to the entire bolting surface.

Requirements for levelness of the bolting surface (Dimensions in mm)

Diameter	Permissible unevenness
< 100	< 0.02
> 100	< 0.05


Assembly of the adapter plates Adapter plates can be fastened to the lifting plate (3) from below or above. Appropriate internal threads or through-holes are provided for this purpose in the lifting plate.


Use the cylindrical pins from the accessory pack for centering.

Assembly of the snap connectors The snap connectors can be snapped onto the lifting plate or bottom cover.

They are removed with the supplied removal key.

7.2 Air connection

	NOTICE
	<p>The maximum permissible mass per jaw is exceeded:</p> <ul style="list-style-type: none"> • Attach flow control couplings to the module.

	NOTICE
	<p>Observe the requirements for the air supply. (👉 6, Page 11) "Technical Data"</p>

The air connections for the stroke movement are arranged on the side of the linear unit.

Connection	Function
A	Extend linear unit
B	Retract linear unit

Further information on the hose-free direct connection contains the catalog data sheet.

7.3 Sensors

The module is prepared for a number of sensors. Other sensors can be used with a mounting kit.

- If you require further information on sensor operation, contact your SCHUNK contact person or download information from our homepage.
- Technical data for the sensors can be found in the data sheets (included in the scope of delivery).

7.3.1 MMS 30 magnetic switch

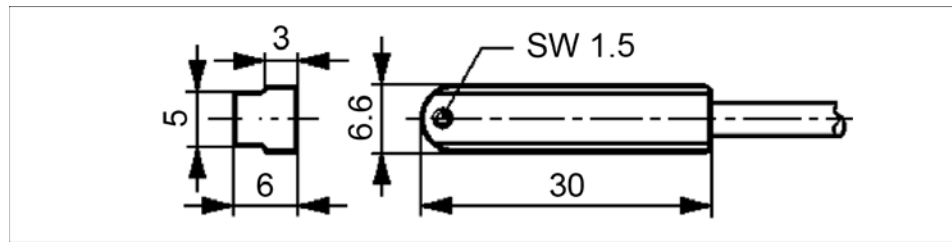


Fig. 1

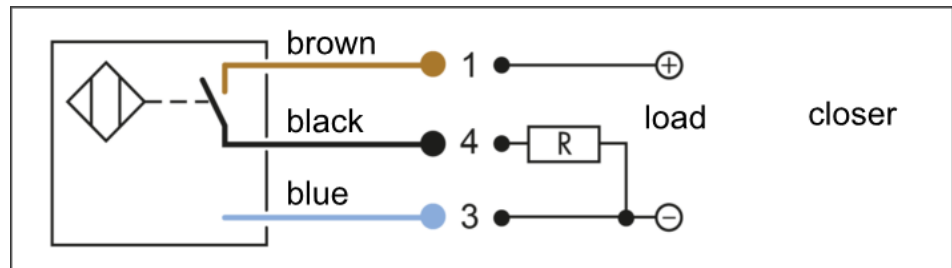



Fig. 2

	NOTICE
	<p>Risk of damage to the sensor during the assembly. Observe a maximum tightening torque of 0.2 Nm for the set-screws.</p>

NOTE

Ferromagnetic material changes the switching positions of the sensor. For example: Adapter plate made of ordinary steel.
At ferromagnetic adapter plates:

- The module must firstly be mounted on the adapter plate
- Then, the positions of the magnetic switch have to be set

Assembly and adjustment of the magnetic switches

Linear unit "extended"

- 1 Set the linear unit to "extended" position.
- 2 Push magnetic switch 1 from above into the T-slot intended for this purpose with the cable downwards until it switches.
- 3 Mount the magnetic switch by tightening the set-screw.
- 4 Retract and extend the lifting plate to test the function.

Linear unit "retracted"

- 1 Set the linear unit to "extended" position.
- 2 Push magnetic switch 2 from above into the T-slot intended for this purpose with the cable downwards until it switches.
- 3 Set the linear unit to "retracted" position.
- 4 Push magnetic switch 2 downwards into the T-slot. The magnetic switch must pass two switching points.
- 5 Push magnetic switch 2 back again slowly until it switches.
- 6 Mount magnetic switch 2 in this position by tightening the set-screw.
- 7 Retract and extend the lifting plate to test the function.


8 Maintenance and Care

8.1 Notes

Original spare parts

When replacing damaged parts (wearing parts/spare parts) only use SCHUNK original spares.

8.2 Maintenance and lubrication intervals

	NOTICE
	<p>At ambient temperature above 60°C the lubricants can harden faster.</p> <ul style="list-style-type: none"> Interval decrease accordingly.

Size	50
Interval [Mio. cycles]	2

8.3 Lubricants/Lubrication points (basic lubrication)



We recommend the lubricants listed.



During maintenance, treat all greased areas with lubricant. Thinly apply lubricant with a lint-free cloth.

Lubricant point	Lubricant
Sliding surfaces	microGleit GP 303
All seals	Renolit HLT 2
Bores on the piston	Renolit HLT 2

8.4 Disassembly of the module

Position of the position numbers ([👉 10, Page 21](#))

	 WARNING
	<p>Risk of injury when the machine/system moves unexpectedly! Remove the energy supplies. Make sure that no residual energy remains in the system.</p>

	 WARNING
	<p>Positions 4, 5 and 6 should not be loosened from the lifting plate, since otherwise the lifting plate would have to be readjusted.</p>

- 1 Remove the compressed air lines.
- 2 Remove the screws (14) and detach the bottom cover (2).
- 3 Loosen the screw (13) and remove the complete piston (16) from the piston rod (4).
- 4 Pull out the lifting plate (3) with the piston rod (4), guide rods (5) and monitoring rod (6). **WARNING! Positions 4, 5 and 6 should not be loosened from the lifting plate, since otherwise the lifting plate would have to be readjusted.**
- 5 Remove all seals.

8.5 Servicing and assembling the module

- Maintenance**
- Clean all parts thoroughly and check for damage and wear.
 - Treat all greased areas with lubricant.
[\(☞ 8.3, Page 16\)](#)
 - Oil or grease bare external steel parts.
 - Replace all wear parts / seals.
 - Position of the wearing parts [\(☞ 10, Page 21\)](#)
 - Seal kit [\(☞ 11, Page 22\)](#)

- Assembly** Assembly takes place in the opposite order to disassembly. Observe the following:
- Unless otherwise specified, secure all screws and nuts with Loctite no. 243 and tighten with the appropriate tightening torque.

8.6 Disposal

The plastics which had been used to manufacture this gripper can be recycled very easily.

You can send it back to SCHUNK

SCHUNK will take care of a proper disposal of the material.

9 Connection technique

9.1 Assembly / Disassembly of the Module

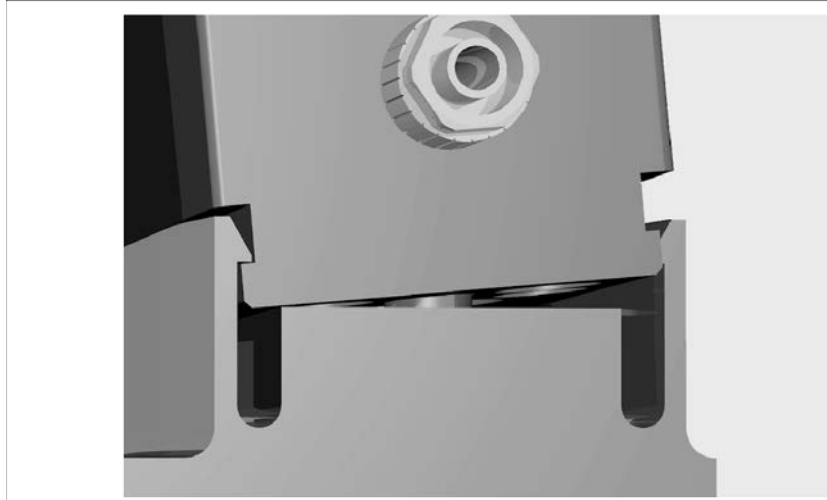


Fig. 3

Every interface of the module is equipped with undercuts, which allow to snap in the connector. Therefore, the modules may be connected 90° offset.

9.2 Connection

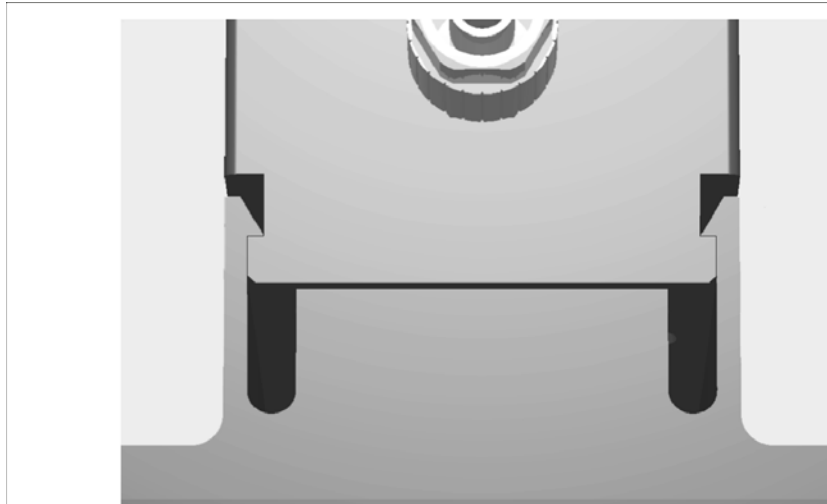


Fig. 4

The snap connector as a component, takes over the functions centering and fastening of the module.

For connection, the components are jammed, until the snap connector snaps into the undercut.

9.3 Loosen the connection in a „one second“- cycle time

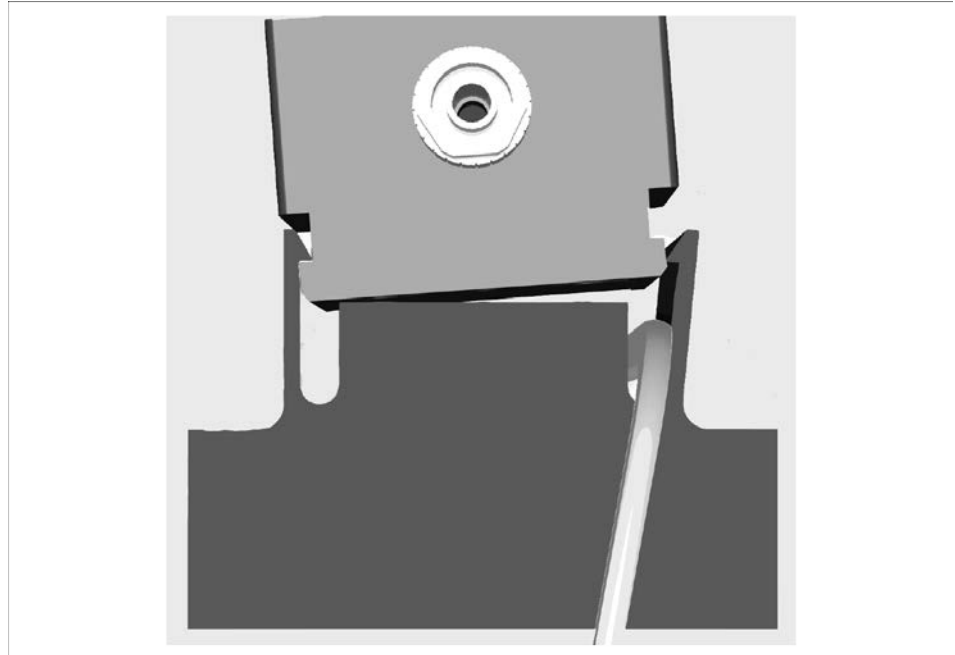


Fig. 5

For disassembling you do not have to cope with damaged or jammed screws.

Just use the tool which is adjusted to the rate of expansion of the snapconnector and that is included in the delivery of every module.

Insert the key into the provided groove of the snap connector and turn the key by 90° in order to loosen the snap connector.

10 Assembly drawing

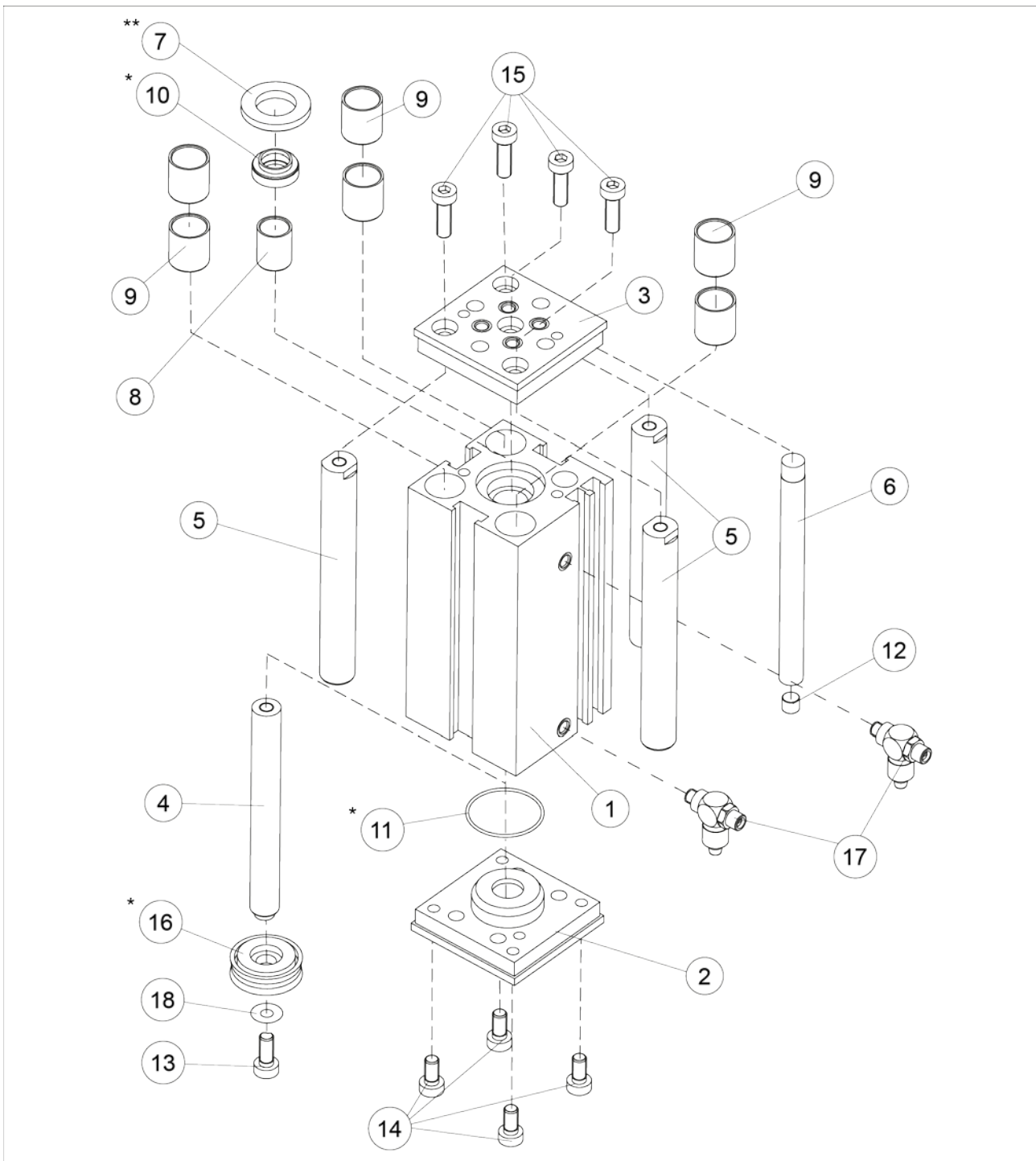


Fig. 6 Assembly

* Wearing part, replace during maintenance.
Included in the seal kit. Seal kit can only be ordered completely.

*** Glued, cannot be disassembled

11 Seal kit

Content of the sealing kit:

- 1x complete piston
- 1x wiper ring 10.0x16.2x6
- 1x O-ring DIN 3771 16.0x1.50

ID.-No. of the seal kit

Seal kit for	ID number
KONEX H 50	0370781

Contents of the seal kit ([🔗 10, Page 21](#)).

12 Accessory pack

Content of the accessories pack:

- 2x cylindrical pin DIN 6325 - Ø6m6x12
- 2x T-nut 29x12x4

ID.-No. of the accessory pack

Accessory pack for	ID number
KONEX H 50	5510624

13 Translation of original declaration of incorporation

in terms of the Directive 2006/42/EG, Annex II, Part 1.B of the European Parliament and of the Council on machinery.

Manufacturer/ SCHUNK GmbH & Co. KG Spann- und Greiftechnik
Distributor Bahnhofstr. 106 – 134
D-74348 Lauffen/Neckar

We hereby declare that on the date of the declaration the following incomplete machine complied with all basic safety and health regulations found in the directive 2006/42/EC of the European Parliament and of the Council on machinery. The declaration is rendered invalid if modifications are made to the product.

Product designation: Plastic pneumatic linear unit / KONEX H 50 / pneumatic
ID number 0305350

The incomplete machine may not be put into operation until conformity of the machine into which the incomplete machine is to be installed with the provisions of the Machinery Directive (2006/42/EC) is confirmed.

Applied harmonized standards, especially:

EN ISO Safety of machinery - General principles for design - Risk assessment
12100:2011-03 and risk reduction

The manufacturer agrees to forward on demand the relevant technical documentation for the partly completed machinery to state offices.

The special technical documents according to Appendix VII, Part B belonging to the incomplete machine have been compiled.

Person authorized to compile the technical documentation:
Robert Leuthner, Address: see manufacturer's address

Lauffen/Neckar, January 2014



p.p. Ralf Winkler, Head of Gripping
Systems Development

