

# Compact-Change-System CWS



## Imprint

### Copyright:

This manual remains the copyrighted property of SCHUNK GmbH & Co. KG. It is solely supplied to our customers and operators of our products and forms part of the product. This documentation may not be duplicated or made accessible to third parties, in particular competitive companies, without our prior permission.

### Technical changes:

We reserve the right to make alterations for the purpose of technical improvement.

**Document number:** 0389563

**Edition:** 01.03 | 12/10/2016 | en

© SCHUNK GmbH & Co. KG

All rights reserved.

Dear customer,

congratulations on choosing a SCHUNK product. By choosing SCHUNK, you have opted for the highest precision, top quality and best service.

You are going to increase the process reliability of your production and achieve best machining results – to the customer's complete satisfaction.

SCHUNK products are inspiring.

Our detailed assembly and operation manual will support you.

Do you have further questions? You may contact us at any time – even after purchase.

Kindest Regards

Yours SCHUNK GmbH & Co. KG

Spann- und Greiftechnik

Bahnhofstr. 106 – 134

D-74348 Lauffen/Neckar

Tel. +49-7133-103-0

Fax +49-7133-103-2399

info@de.schunk.com

www.schunk.com



Reg. No. 003496 QM08



Reg. No. 003496 QM08

## 1 About this Short Manual

This Short Manual describes the use of the manual Compact-Change-System CWS with a gripper.

If any data listed within this manual vary from the ones listed in the grippers manual, these data listed here are valid.

Detailed information about assembly, connection, installation, use and maintenance of the gripper can be found on the manual of the gripper.

### 1.1 Safety notes



#### **WARNING**

##### **Risk of injury from gripper unit falling!**

**If the spindle will be lubricated with grease or oil, or the unit is used in lubricated environment, there is a risk of the spindle getting loose due to the reduced friction torque while vibrations. The Compact-Change-Tool CWA with the gripper can be seperated from the Compact-Change-Master CWK and can fall down!**

- Do not lubricate the spindle with oil or grease!

## 2 Scope of delivery

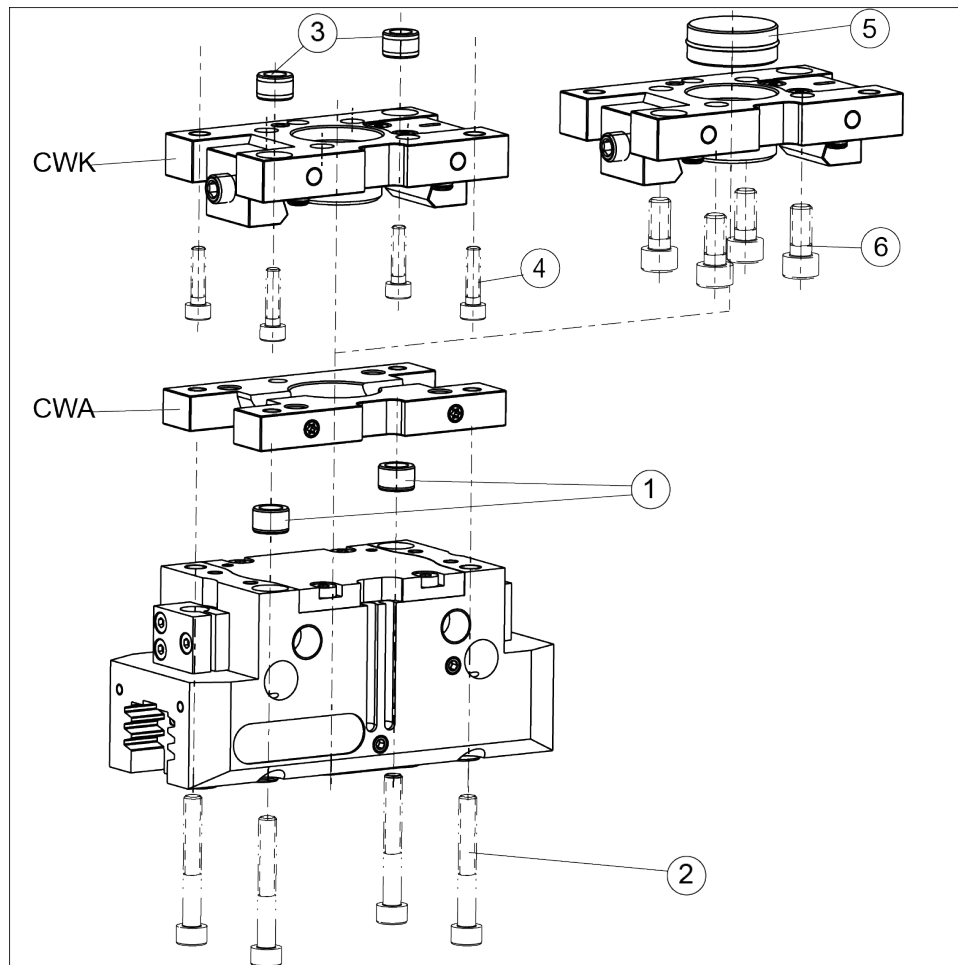
The scope of delivery includes

- Compact-Change-Master CWK  
Accessory pack CWK: 2x Centering sleeve
- Compact-Change-Tool CWA
- A-CWA (for separate order - see catalog)  
Accessory pack: 2x O-ring / 2x Centering sleeve / 2x Screws

### 3 Assembly

#### 3.1 Mechanical connection

##### Mounting



Mounting of the Compact-Change-System CWS

- 1 Adjust the Compact-Change-Tool CWA with the centering sleeves (1) (in the enclosed pack of the gripper) at the gripper and fix it with the screws (2) (not included in scope of delivery).
- 2 Adjust the Compact-Change-Master CWK with the centering sleeves (3) (in enclosed pack of CWK) at the robot flange or adapter plate and fix it with the screws (4) (not included).

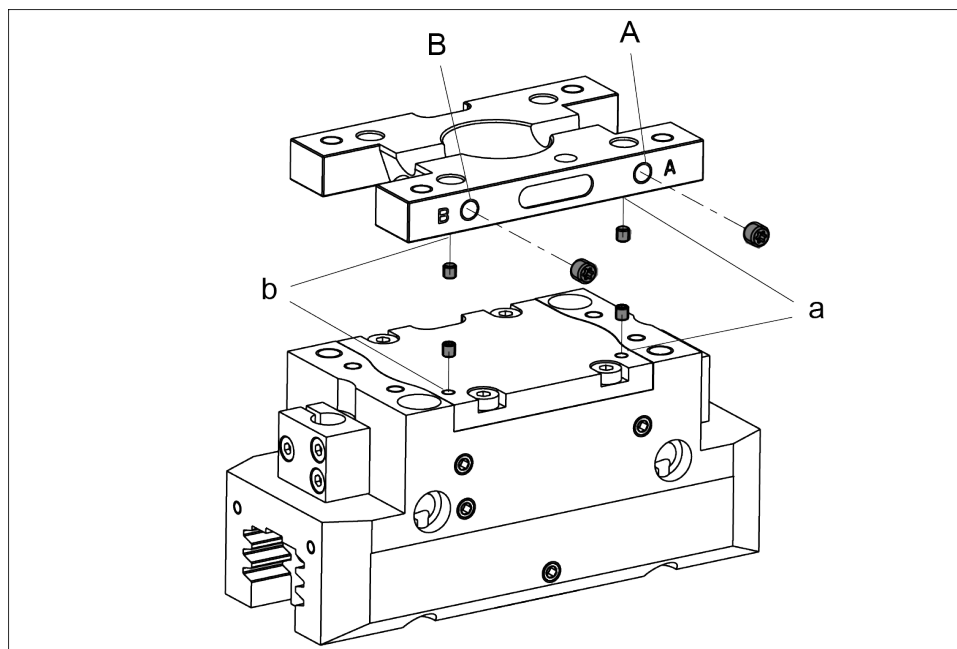
Alternatively the mounting to the robot flange for sizes CWK 80/10/125 can be done by the integrated ISO-9409 pattern.

For assembling you need a boss plate (5) and socket head screws (6) (not included).

**Mounting of optional adapterplate A-CWA**

- 1 For mounting the adapter plate A-CWA onto the gripper side of the CWA, remove the setscrews and put the O-rings (in enclosed pack of the A-CWA) into the specified recesses of the CWA.
- 2 Adjust the A-CWA with the centering sleeves at the CWA and fix it with the screws (centering sleeves and screws in the enclosed pack of the A-CWA).

**3.2 Air connection**



Air connections at Compact change tool CWA

- 1 For the hose-free air connection the locking screws at the gripper and at the CWA at the ports **a** and **b** have to be removed.
- 2 Put the O-rings (included in the enclosed pack of the gripper) into the specified recesses of the CWA.

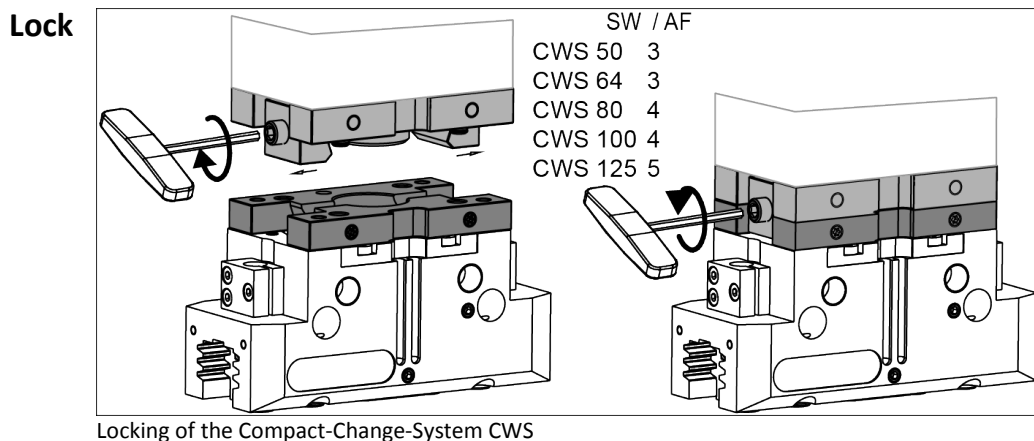
Alternatively the air connections on the side of the CWA can be used.

- For this remove the locking screws at the CWA off the ports **A** and **B**.

If further air through-feed is required you can use the ports C and D (at the backside).

Further information on the hose-free direct connection contains the catalog data sheet.

## 4 Operation



- 1 Turn in the spindle with an Allen key upto the mechanical stop.  
Actuating from the left: Turn clockwise  
Actuating from the right: Turn counter clockwise
- 2 Assemble CWK and CWA and turn the spindle back again.

**Note the max. tightening torque!**

CWS	50	64	80	100	125
Tightening torque [Nm]	7	7	15	15	20

## Unlock

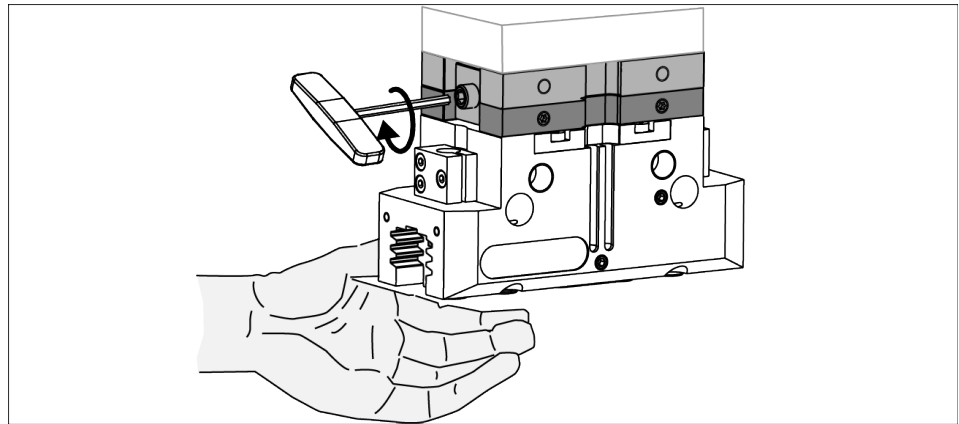


### **WARNING**

**Risk of injury from gripper unit falling!**

**Never loose the locking while load is hanging vertically!**

- Compact-Change-Tool CWA with the gripper has to be held tightly while unlocking.



Unlocking of the Compact-Change-System CWS

Turn in the spindle with an Allen key upto the mechanical stop.