

Hard Metal Clamping Inserts

Inserts for increasing the friction on the contact surface between the gripper fingers and the workpiece.



Function description

The HM clamping inserts are used in gripper top jaws at the point contacting the workpiece. The angular, rough surface helps to grip the workpiece securely.

Your advantages and benefits

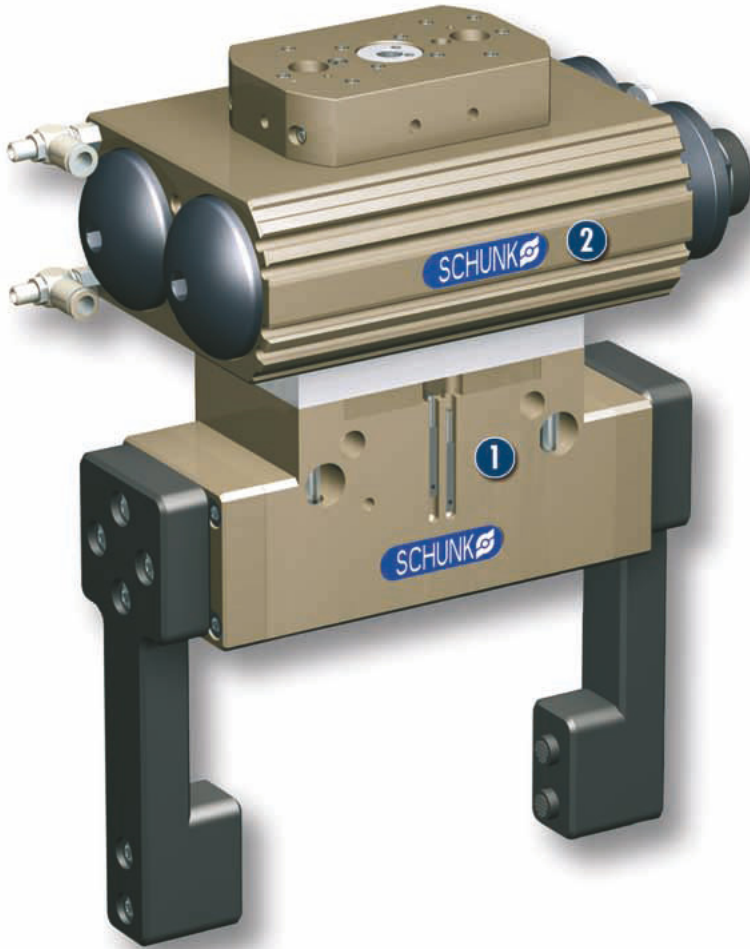
Increase of the friction factor
therefore requiring less gripping force

Various sizes available

Fast change possible

High load bearing capacity

Application example



Area of application

variable clamping tasks, for sensitive workpieces

1 DPG-plus 125 2-Finger Parallel Gripper, with top fingers equipped with carbide clamping inserts

2 SRU 35.1-180-3-4 Rotary Actuator in sealed IP67 version

General information

Material
Steel, hardened

Warranty
24 months

Notes

The HM clamping inserts should not be used if scratch marks are not desired on the workpiece.

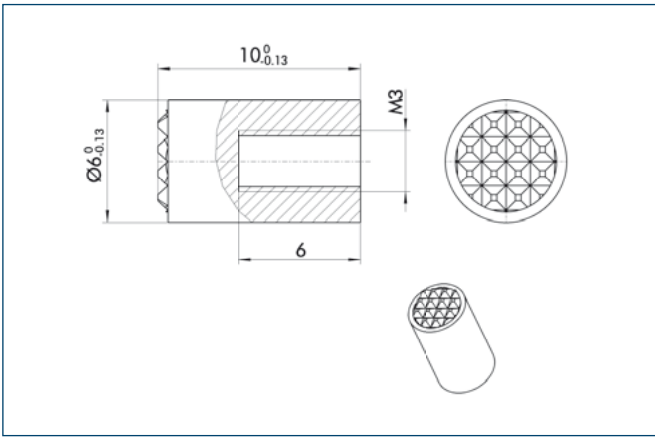




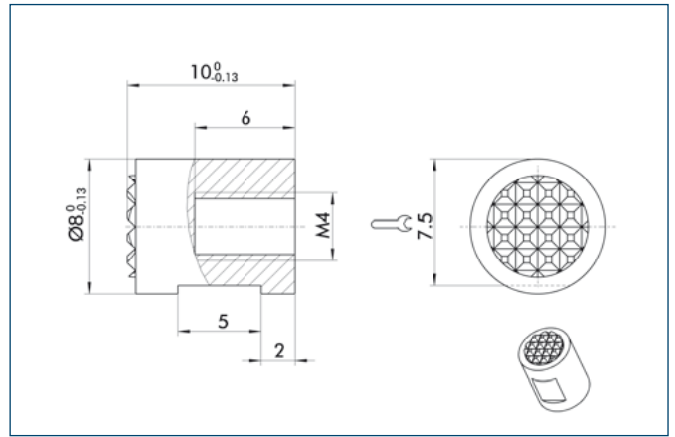
Technical data

Description	ID	Weight	Form	Material
HM 6	0300780	0.002 kg	Cylinder	Carbide
HM 8	0300781	0.004 kg	Cylinder	Carbide
HM 10	0300782	0.006 kg	Cylinder	Carbide
HM 11	0300783	0.01 kg	Cylinder	Carbide
HM 12	0300784	0.012 kg	Cylinder	Carbide
HM 13	0300785	0.016 kg	Cylinder	Carbide
HM 14	0300786	0.022 kg	Cylinder	Carbide
HM 15	0300787	0.012 kg	Cylinder	Carbide

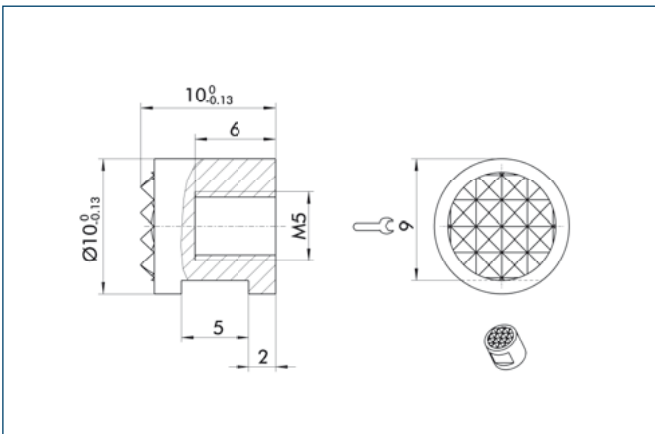
HM 6



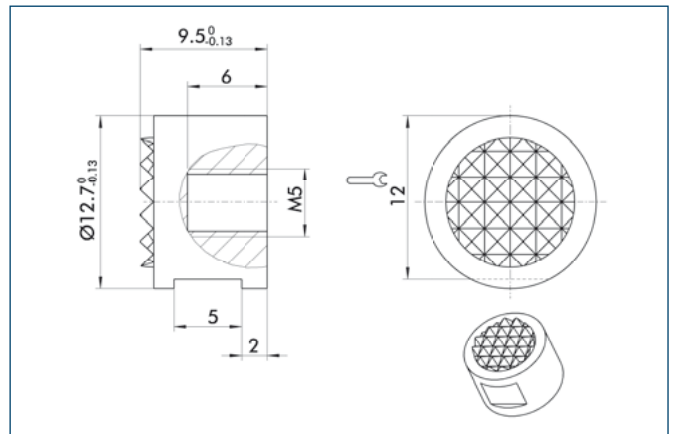
HM 8



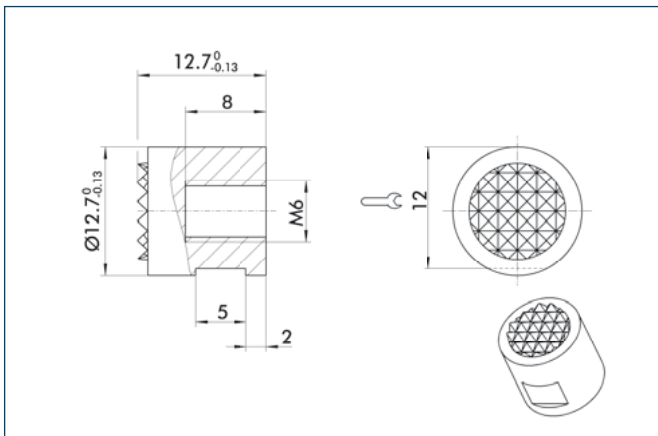
HM 10



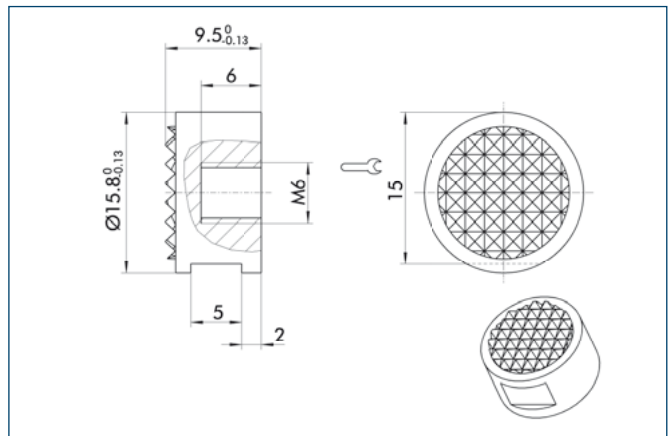
HM 11



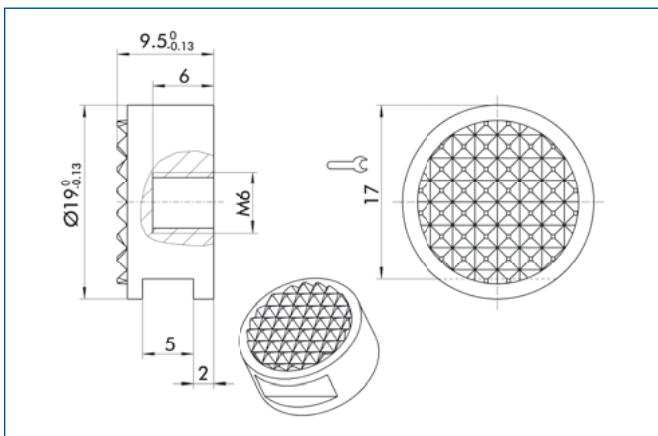
HM 12



HM 13



HM 14



HM 15

