

PFH 30 - 50

Guide strip spare parts package

Repair Instructions

SCHUNK GmbH & Co. KG | Spann- und Greiftechnik
D-74348 Lauffen/Neckar | Bahnhofstr. 106 – 134
Tel. +49-7133-103-0 | Fax +49-7133-103-2399
info@de.schunk.com | www.schunk.com

Superior Clamping and Gripping



Copyright

This manual remains the copyrighted property of SCHUNK GmbH & Co. KG. It is solely supplied to our customers and operators of our products and forms part of the product. This documentation may not be duplicated or made accessible to third parties, in particular competitive companies, without our prior permission.

Technical changes

We reserve the right to make alterations for the purpose of technical improvement.

Document number:1005283

Edition:01.00 | 23/01/2017 | de - en

© SCHUNK GmbH & Co. KG
All rights reserved.



1 Intended use

If the product can no longer be fully opened or closed, a component part may be damaged. The cause for this defect is often a collision. After a collision, the gripper fingers and base jaw may also be damaged.

2 Scope of Delivery

| Designation | PFH | | |
|--------------------------|-----|----|----|
| | 30 | 40 | 50 |
| Guide strip [pcs.] | 1 | 1 | 1 |
| Intermediate stop [pcs.] | 1 | 1 | 1 |
| Screw [pcs.] | 4 | 4 | 4 |
| Nut [pcs.] | 2 | 2 | 2 |
| Cylindrical pin [pcs.] | 1 | 1 | 1 |
| Centering sleeve [pcs.] | 2 | 2 | 2 |

| Designation | PFH | | |
|---------------------------------|-----|----|----|
| | 30 | 40 | 50 |
| Spare part package Cover [pcs.] | 2 | 2 | 2 |
| Complete sealing kit [pcs.] | 1 | 1 | 1 |

3 Applicable documents

- Catalog data sheet of the product *
- Assembly and operating manual of the product *

The documents marked with an asterisk (*) can be downloaded on our homepage www.schunk.com.

4 Notes on particular risks



WARNING

Risk of injury due to sudden movements!

If the energy supply is switched on or if residual energy is still present in the system, this can cause components to move unexpectedly, which may result in serious injuries.

- Switch off energy supply and secure against re-connection.
- Ensure that no residual energy remains in the system.



WARNING

Risk of injury due to spring forces!

For products with gripping force maintenance, parts are under spring tension. During disassembly parts may move unexpectedly and cause serious injuries

- Disassemble the product cautiously.
- Make sure that no residual energy remains in the system.

5 Tools/auxiliary tools

- Hexagon socket wrench
- Screwdriver

6 Recommended lubricants

| Lubricant point | Lubricant |
|---------------------------|--------------------|
| Metallic sliding surfaces | Molykote BR 2 plus |
| All seals | Renolit HLT 2 |
| Bores on the piston | Renolit HLT 2 |

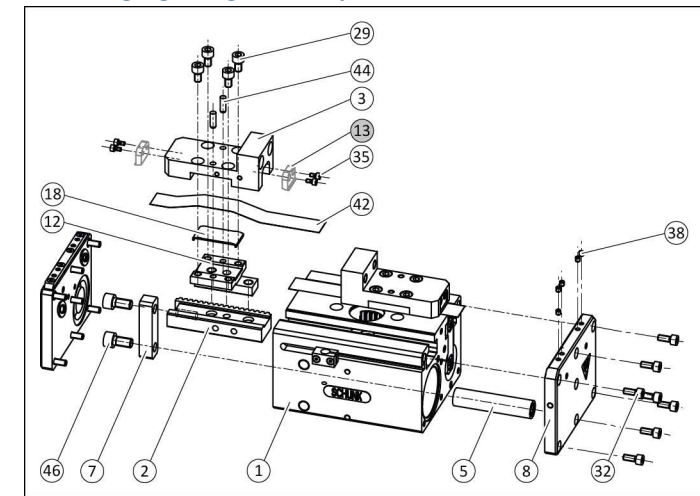
7 Tightening torque

| Item | Designation | PFH 30-50 | | |
|------|----------------|-----------|-----|-----|
| | | 30 | 40 | 50 |
| 29 | Screw [Nm] | 6.1 | 10 | 25 |
| 32 | Screw [Nm] | 6.1 | 6.1 | 6.1 |
| 35 | Screw [Nm] | 1.2 | 1.2 | 1.2 |
| 38 | Set-screw [Nm] | 3.1 | 3.1 | 3.1 |
| 46 | Screw [Nm] | 18 | 43 | 160 |

8 Threadlocker

If not stated otherwise, screws can be secured using Loctite 243 or a similar adhesive.

9 Changing the guide strips



Dismantling

- Remove all compressed air lines.
- Disassemble gripper from the machine/automated system.
- Unscrew screws (29) and remove the guide strip (3) and cylinder pins (44).
- Unscrew set-screws (38) and screws (32) and remove the cover plate (8) with cover belts (42).
- Unfasten and remove screws (46) and take out the driver (7) with cover belts (42) and the piston rod (5).
- Remove locating plate (18) from intermediate stop (12) and disassemble the intermediate stop from the gear rack (2).
- Remove gear rack (2), intermediate stop (12) and locating plate (18) from the housing (1).

Assembly

- When assembling, use the parts from the spare part package.
- Clean all parts thoroughly, check for damage and wear and grease with a lint-free cloth or brush.
- If necessary replace seals shown in gray in the picture.
- Mount the intermediate stop (12) onto the gear rack (2) and adhere the locating plate (18) to the intermediate stop using superglue.
- Slide the gear rack (2), intermediate stop (12) and locating plate (18) into the housing (1).
- Insert driver (7) and the piston rod (5) and fasten with screws (46).
- Insert cover belts (42) and secure cover plate (8) with screws (32) and set-screws (38).
- Fasten guide strip (3) using the cylinder pins (44) and the screws (29).
- Assemble gripper on the machine/automated system.
- Secure all compressed air lines.