

PGH 30-70

Guide strip spare parts package

Repair Instructions

SCHUNK GmbH & Co. KG | Spann- und Greiftechnik
D-74348 Lauffen/Neckar | Bahnhofstr. 106 – 134
Tel. +49-7133-103-0 | Fax +49-7133-103-2399
info@de.schunk.com | www.schunk.com

Superior Clamping and Gripping



Copyright

This manual remains the copyrighted property of SCHUNK GmbH & Co. KG. It is solely supplied to our customers and operators of our products and forms part of the product. This documentation may not be duplicated or made accessible to third parties, in particular competitive companies, without our prior permission.

Technical changes

We reserve the right to make alterations for the purpose of technical improvement.

Document number:1005285

Edition:01.00 | 23/01/2017 | de - en

© SCHUNK GmbH & Co. KG
All rights reserved.



1 Intended use

If the product can no longer be fully opened or closed, a component part may be damaged. The cause for this defect is often a collision. After a collision, the gripper fingers and base jaw may also be damaged.

2 Scope of Delivery

Designation	PGH 30-70			
	30	40	50	70
ETP cover [pcs.]	1	1	1	1
ETP sealing kit [pcs.]	1	1	1	1
Nut [pcs.]	1	1	-	-
Screw [pcs.]	7	1	-	9
Linear ball guide [pcs.]	1	1	1	1
Cylindrical pin [pcs.]	2	-	-	-

3 Applicable documents

- Catalog data sheet of the product *
 - Assembly and operating manual of the product *
- The documents marked with an asterisk (*) can be downloaded on our homepage www.schunk.com.

4 Notes on particular risks



WARNING

Risk of injury due to sudden movements!

If the energy supply is switched on or if residual energy is still present in the system, this can cause components to move unexpectedly, which may result in serious injuries.

- Switch off energy supply and secure against re-connection.
- Ensure that no residual energy remains in the system.



WARNING

Risk of injury due to spring forces!

Products that use spring force or have gripping force maintenance contain parts that are under spring tension. This can cause components to move unexpectedly when being dismantled, which may result in serious injuries.

- Carefully dismantle the product.

5 Tools/auxiliary tools

- Hexagon socket wrench
- Screwdriver
- Clamping device

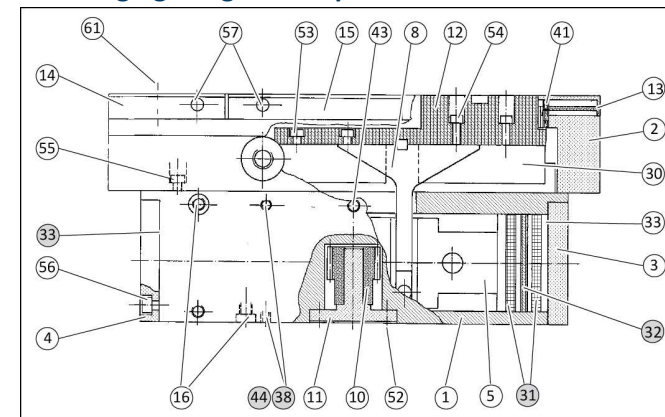
6 Recommended lubricants

Lubricant point	Lubricant
Linear Bearing	Renolit HP
Ball seals	Renolit HLT 2
Piston running surface, Pinion, Rack	Molykote BR 2 plus

7 Threadlocker

If not stated otherwise, screws can be secured using Loctite 243 or a similar adhesive.

8 Changing the guide strips



Dismantling

- Remove all compressed air lines.
- Disassemble gripper from the machine/automated system.
- Remove screws (57) and take off the covering (14).
- **Size 50 only:** Remove covering (15).
- If necessary, remove proximity switch.
- Remove screws (55) and take off covering housing (2).
- **Size 50 only:** Screw back set-screws (41) and lift off covering (13).
- Remove screws (53, 54) and take out base jaw (12) fully with driver (8).
- Remove screws (52), take pinion bearing (11) and pinion (10) out of the housing (1). Tip: To prevent the parts from tipping out, remove the middle screws last.
- **WARNING! Cover may be under spring tension and become ejected.** Carefully remove screws (56) and take off covers (3) and (4).
- Remove linear guide (30) from the housing (1).

Assembly

When assembling, use the parts from the spare part package.

- Clean all parts thoroughly, check for damage and wear and grease with a lint-free cloth or brush.
- If necessary replace seals shown in gray in the picture.
- Insert linear guide (30) into the housing (1).
- Fasten the covers (3) and (4) with screws (56).
- Insert the base jaws (12) fully with the driver (8) in such a way that the recesses at the bottom sides are lateral to the carriage of the linear guide. Tighten screws (53, 54).
- Insert pinion bearing (11) and pinion (10) into the housing and tighten screws (52).
- **Size 50 only:** Place covering (13) on and tighten set-screws (13). The covering (13) must be able to move easily without falling out.
- **Size 30/ 40/ 70:** Insert clamping sleeve (61) into covering (14) and place covering (13) on in such a way that the groove of the covering is above the clamping sleeve. If necessary, slightly push through the clamping sleeve (61) from below so that it extends a little into the groove of the covering (13) without blocking it.
- Place covering housing (2) on and tighten screws (55).
- If necessary, fasten proximity switch in place.
- **Size 50 only:** Place on covering (15) and tighten screws (57).
- Assemble gripper on the machine/automated system.
- Secure all compressed air lines.